

# Arnolds | Keys

Trusted Property Experts

## Autumn Address 2021

Welcome to our Autumn Newsletter

Norfolk needs to learn to blow its own trumpet to the rest of the country and beyond. We all know what a great place our county is to do business, but sadly that message doesn't always get across to potential investors elsewhere.

We were delighted to be asked to take part in a popular podcast series published by EGi Radius, the people behind Estates Gazette, the leading commercial property publication. They asked managing partner Guy Gowing to talk about the economic and business situation here in Norfolk.

[Read the full article](#)



With improved connectivity, an influx of wealthy occupiers an abundance of space with which to supply the Cambridge technology sector, Norfolk is poised for take-off according to Arnolds Keys managing partner Guy Gowing.

[Listen to the Podcast](#)



### FUTURE OF NATIONALLY-IMPORTANT HISTORIC BUILDING IN NORWICH SECURED POST

The future of an iconic historic Norwich building has been secured with the news that the tenancy of the Briton's Arms on Elm Hill in the city is to be taken over by a Norwich chef.

[Read the full article](#)



Norfolk Staycations – just a holiday, or a gateway to a new lifestyle?



### TECH CORRIDOR IS KEY TO ENSURING THAT NORFOLK IS NOT LEFT BEHIND IN 'LEVELLING UP' PROCESS

The oft-quoted but as yet unfulfilled promise of 'levelling up' is finally starting to come to the political fore as Covid slowly starts to recede – and it is vital that here in Norfolk we leverage the Cambridge Norwich Tech Corridor (often referred to as the A11 tech corridor) as one of the major ways of ensuring that our part of the world is not left behind.

[Read more](#)



### HOW OUR EXPERT WITNESS SERVICE CAN HELP RESOLVE DISPUTES

TV courtroom dramas often feature an expert witness: a pathologist outlining the cause of death, a psychologist expressing an opinion about someone's state of mind as they committed a crime, or a forensic scientist proving or disproving a point made by the prosecution.

This all makes for good entertainment, but the concept of the expert witness is rooted in reality – and although murder trials are not part of their role (thankfully), the courts do make regular use of expert property witnesses as well.

[Read more](#)



### SOARING CONSTRUCTION COSTS CALL FOR REALISM ON RESIDENTIAL DEVELOPMENT LAND

The seemingly inexorable rise in house prices is leading to a buoyant residential development market – but soaring building costs are altering the economic balance when it comes to land values.

Landowners might look at the housing market and think that it is worth holding onto land until its value has risen alongside house prices. But this is unlikely to happen; there is still strong demand for development land, but there needs to be an element of realism when it comes to land values.

[Read more](#)



Hundreds gathered at Manor Farm in Aldborough, between Aylsham and Cromer, to bid for the collection owned by Billy Hammond.

Highlights of the sale included a 1958 Fordson Power Major tractor which sold for £6,200, a 1953 Field Marshall which sold for £9,800 and a 1936 John Deere Model B tractor which fetched £3,750.

[Read more](#)

## Deals Done



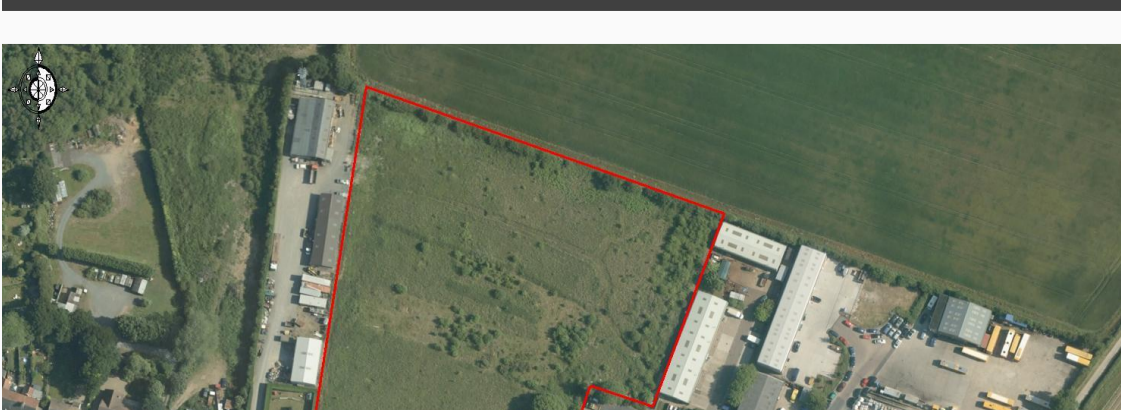
Harbour House, Norwich  
Office building  
**SOLD**

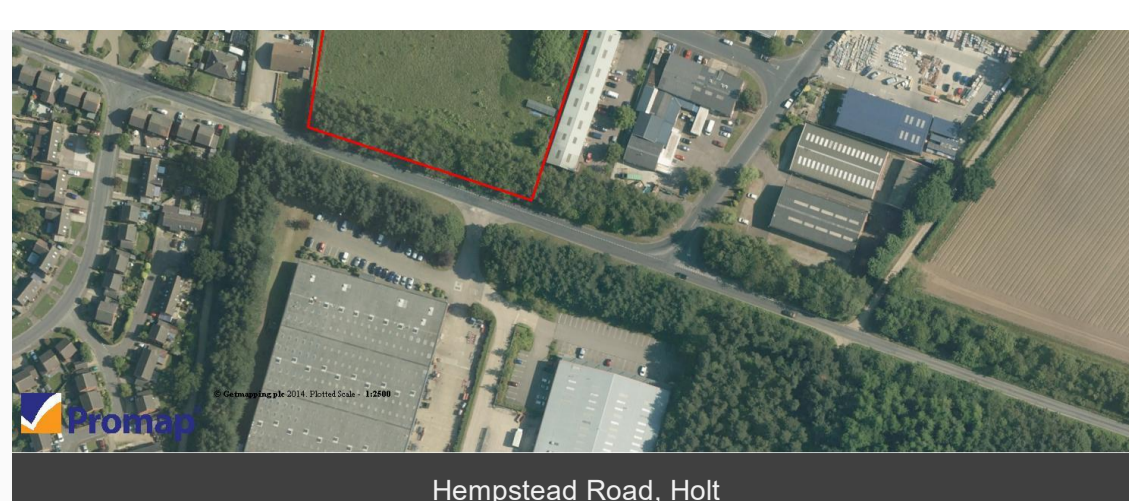


Turing Park, Norwich  
storage & distribution and Industrial with offices  
**Let & Sold**



Exchange Street, Norwich  
Office Space  
**Sold**





Hempstead Road, Holt  
Commercial Development

**Sold**



Milestones Hospital, Catfield

**Acquired**

### Properties of Interest



AYLSHAM  
NEW OFFICE BUILDINGS TO LET or FOR SALE  
Range of Sizes

[Find out more](#)



LONDON STREET, NORWICH  
GROUND FLOOR RETAIL / OFFICE / CAFE PREMISES TO LET  
180.63m2 (1,945 SqFt)

[Find out more](#)

### New Team Members



[CONTACT THE TEAM](#)



Copyright © 2021 Arnolds Keys LLP. All rights reserved.

You are receiving these emails because you signed up to our newsletter ADDRESS. If you no longer wish to hear from Arnolds Keys with updates on commercial news please change your preferences below.

Our mailing address is:  
2 Prince of Wales Road | Norwich | NR1 1LB

Want to change how you receive these emails?  
You can [update your preferences](#) or [unsubscribe from this list](#).